

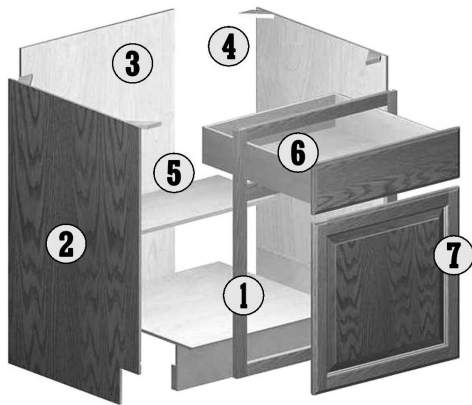
WOOD CHARACTERISTICS & VARIATIONS

Naturally occurring wood characteristics such as variations in color, grain, mineral streaks and knots are not considered defects.

Color variations are a natural occurrence due to species, age, character of cabinets, and exposure to UV light and sunlight. Such variations and changes are not considered defects. For these reasons, new and/or replacement cabinets may not match display samples and/or existing cabinets.

Warping is the bending or twisting of a part. To measure a door or shelf, lay the product on a flat surface and measure the gap from the surface to the part. The standard allowable tolerance for wood is $\frac{1}{8}$ " per lineal foot. Materials that fall within specification are considered acceptable, as a part of the natural characteristics of wood.

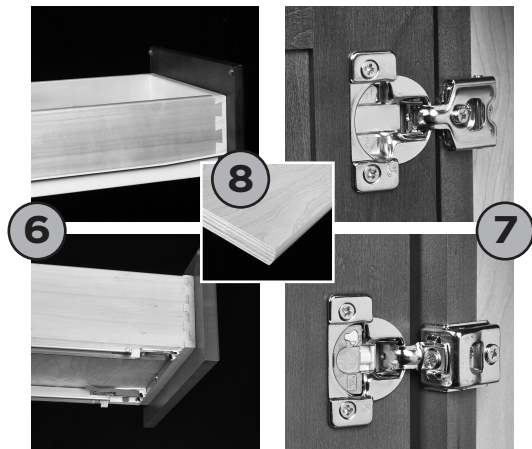
STANDARD CABINET SPECIFICATIONS



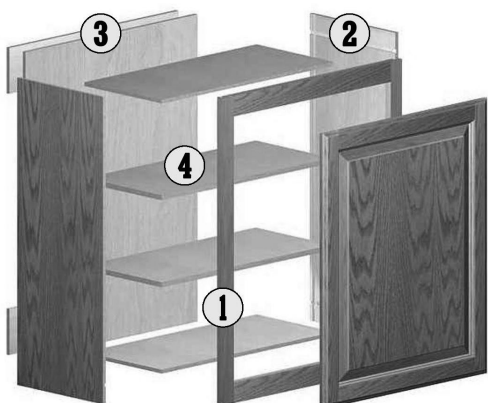
BASE CABINETS

- 1 Cabinet fronts are made from $\frac{3}{4}$ " solid maple wood. Rails are pocket drilled and assembled with $1 \frac{1}{4}$ " screws for rugged durability.
- 2 Side panels and bottom – $\frac{1}{2}$ " plywood with matching exterior laminate – glued and stapled in a $\frac{1}{2}$ " dado in the cabinet's front frame.
- 3 Back panels – made from vinyl-covered (inside only) $\frac{1}{2}$ " plywood – are glued and nailed in a $\frac{1}{2}$ " dado and stapled to the hang rail and cabinet bottom.
- 4 All-wood $\frac{3}{4}$ " corner blocks are installed on all corners.
- 5 Half-depth adjustable shelf of $\frac{3}{4}$ " plywood with bull-nosed, foil-covered front edges. The shelves are held in place with self-locking $\frac{1}{4}$ " diameter clips on the sides.

FINISH, DRAWERS & HINGES



- 6 Clear finishes use a catalyzed varnish, and paint finishes use a post-catalyzed lacquer. Our finish is resistant to household chemicals, water, food stains and mild acids.
- 6 All drawers are constructed using $\frac{5}{8}$ " clear finished solid wood with dovetail construction. Drawer bottom is $\frac{1}{4}$ " plywood in a dado into drawer sides. All drawers (including Pull Outs) are rated for 75 lbs.
Saginaw: Side-mount, standard epoxy GRASS glides
Dartmouth, Hudson & York: Full-extension, undermount GRASS glides with soft-close
- 7 Saginaw: Hidden, six-way adjustable GRASS hinge
Dartmouth, Hudson & York: Hidden, six-way adjustable GRASS hinge with integrated soft-close mechanism
All cabinets that require handing are handed left (hinge is on the left when looking at the cabinet). Wall cabinets can simply be flipped over to change hinging. For base cabinets, remove and flip door, then screw to other side.
- 8 Adjustable $\frac{3}{4}$ " plywood shelf with bull-nosed, foil-covered front edges. The shelves are held in place with self-locking $\frac{1}{4}$ " diameter clips on the sides.



WALL CABINETS

- 1 Cabinet fronts are made from $\frac{3}{4}$ " solid wood. Rails are pocket drilled and assembled with $1 \frac{1}{4}$ " screws for rugged durability.
- 2 Side panels and bottom – $\frac{1}{2}$ " plywood with matching exterior laminate – glued and stapled in a $\frac{1}{2}$ " dado in the cabinet's front frame
- 3 Back panels – made from vinyl-covered (inside only) $\frac{1}{2}$ " plywood – are glued and nailed in a $\frac{1}{2}$ " dado and stapled to the cabinet tops and bottom. Plywood hanging rails are installed at both the top and bottom of the cabinet.
- 4 Adjustable $\frac{3}{4}$ " plywood shelf with bull-nosed, foil-covered front edges. The shelves are held in place with self-locking $\frac{1}{4}$ " diameter clips on the sides.