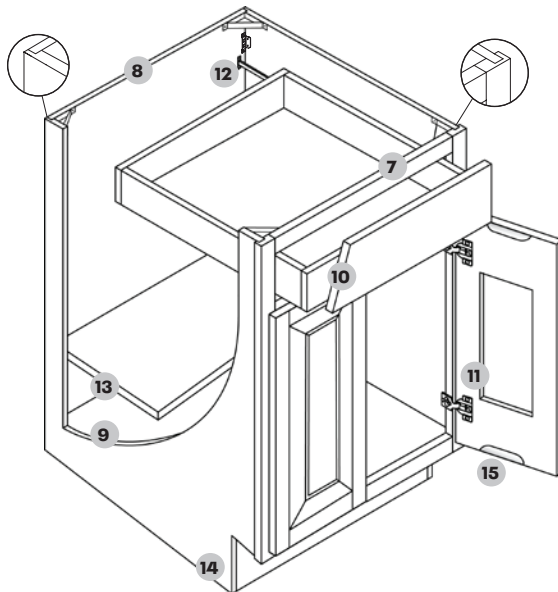
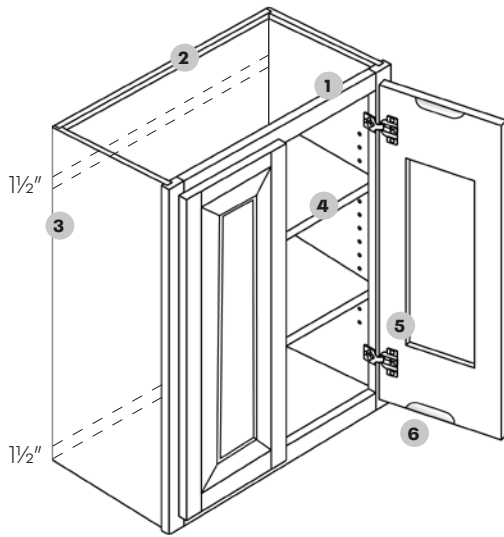


Country Collection



- 1 **Frame** — $\frac{3}{4}$ " thick, $1\frac{1}{2}$ " wide, kiln-dried solid hardwood. Assembled with glue and nails, under clamp pressure, which ensures squareness.
- 2 **Back panel** — $\frac{1}{4}$ " substrate, with 3" plywood surrounding frame, made of $\frac{1}{2}$ " plywood. Rabbeted and stapled into cabinet sides, screwed into top and bottom. Includes $1\frac{1}{2}$ " hanging rails.
- 3 **End panel** — Top and bottom $\frac{1}{2}$ " plywood substrate, with light maple woodgrain laminate finish.
- 4 **Shelves** — $\frac{3}{4}$ " thick, plywood; fully adjustable
- 5 **Hinges** — Heavy duty steel concealed adjustable hinge.
- 6 **Doors** — Finger pull groove for easy access
- 7 **Base frame** — $\frac{3}{4}$ " thick, $1\frac{1}{2}$ " wide, kiln-dried solid hardwood. Assembled with glue and nails, under clamp pressure, which ensures squareness.
- 8 **Back panel** — $\frac{1}{4}$ " substrate, with 3" plywood surrounding frame, all plywood material. Rabbeted and stapled into cabinet sides, screwed into top and bottom.
- 9 **End panel** — $\frac{1}{2}$ " plywood substrate, with light maple woodgrain laminate interior finish.
- 10 **Drawers** — $\frac{5}{8}$ " Plywood sides with $\frac{5}{8}$ " thick bottom fastened with screws
- 11 **Hinges** — Heavy duty steel concealed adjustable hinge.
- 12 **Glides** — High quality epoxy coated steel side mounted glides.
- 13 **Shelves** — $\frac{3}{4}$ " thick, plywood; fully adjustable. (10" deep)
- 14 **Toe kick** — $4\frac{1}{2}$ " Toe kick with $2\frac{1}{2}$ " inset on all standard base and vanity cabinets.
- 15 **Doors** — Finger pull groove for easy access