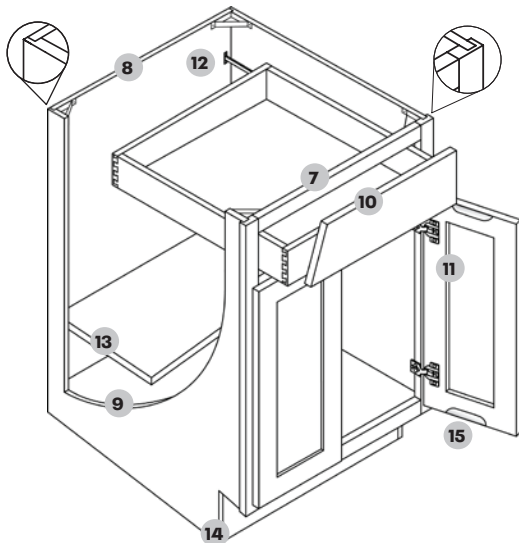
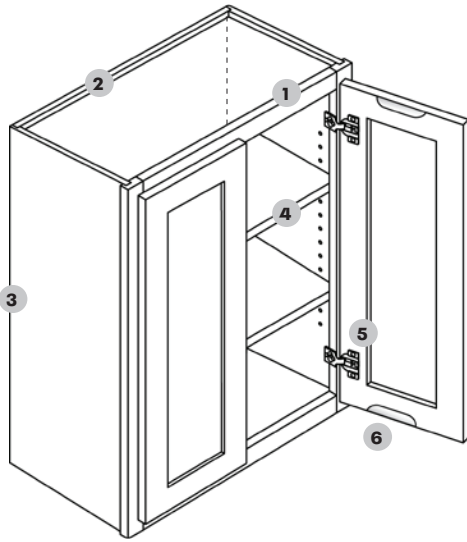


Luxor Collection



- 1 **Frame** — 3/4" thick Solid Wood, 1½" wide, kiln-dried solid hardwood. Assembled with glue and nails, under clamp pressure, which ensures squareness.
- 2 **Back panel** — Made of 1/2" plywood. Rabbeted and stapled into cabinet sides, screwed into top and bottom.
- 3 **End panel** — Top and bottom 1/2" plywood substrate, with light maple woodgrain laminate interior. Matching exterior.
- 4 **Shelves** — 3/4" thick, plywood; fully adjustable.
- 5 **Hinges** — Heavy duty steel concealed hinge, adjustable with soft-close mechanism.

*36" and 42" Wall cabinets will have 3 hinges

- 6 **Doors** — Finger pull groove for easy access
- 7 **Base frame** — 3/4" thick Solid Wood, 1½" wide, kiln-dried solid hardwood. Assembled with glue and nails, under clamp pressure, which ensures squareness.
- 8 **Back panel** — All plywood material. Rabbeted and stapled into cabinet sides, screwed into top and bottom.
- 9 **End panel** — 1/2" plywood substrate, with light maple woodgrain laminate interior. Matching exterior.
- 10 **Drawers** — 5/8" solid wood Dovetail sides 3/8" thick bottom; Finger pull groove for easy access
- 11 **Hinges** — Heavy duty steel concealed hinge, adjustable with soft-close mechanism.
- 12 **Glides** — 3/4" extension, high quality soft-close under mounted glides.
- 13 **Shelves** — 3/4" thick, plywood; fully adjustable. (10" deep)
- 14 **Toe kick** — 4½" Toe kick with 2½" inset on all standard base and vanity cabinets.
- 15 **Doors** — Finger pull groove for easy access