

Door Styles

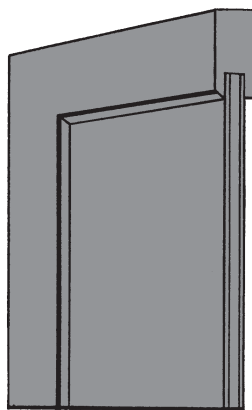
Kitchen Kompact, Inc.
911 E. 11th St. (47130)
P.O. Box 868
Jeffersonville, IN 47131-0868
TEL: 812/282-6681
FAX: 812/282-7880
www.kitchenkompact.com



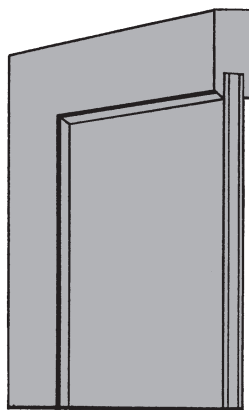
Glenwood and Warmwood: Shaker style door frames are made of solid beech mortised and tenoned. The recessed plywood insert is three-ply with a rotary cut hard maple veneer. Face frames are built using a mixture of solid beech and sycamore. Drawer heads have routed finger pulls.

Bretwood and Mellowood: Door frames are mortised and tenoned construction of solid hard maple. The recessed plywood insert is three-ply with a rotary cut hard maple veneer. Drawer heads have routed finger pulls.

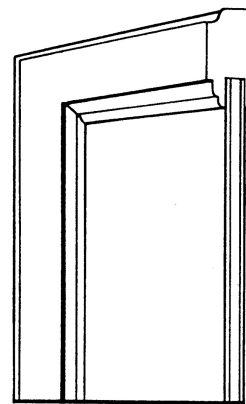
Chadwood: Solid Appalachian oak frames are joined by mortise and tenon. The recessed plywood insert is three-ply with a rotary cut red oak veneer. Drawer heads have routed finger pulls.



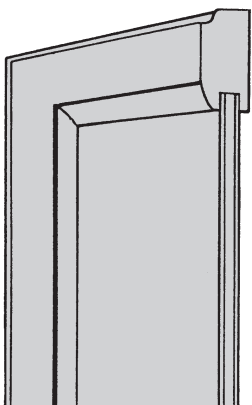
Glenwood



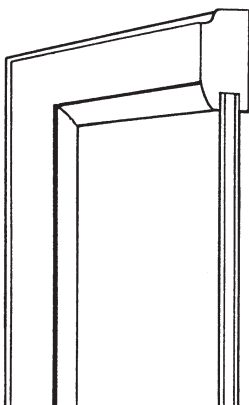
Warmwood



Chadwood



Bretwood



Mellowood

Wall Cabinets

Kitchen Kompact, Inc.
911 E. 11th St. (47130)
P.O. Box 868
Jeffersonville, IN 47131-0868
TEL: 812/282-6681
FAX: 812/282-7880
www.kitchenkompact.com



Frames: All frames are built of solid 3/4" hardwoods. Each rail is kiln-dried, joined by mortise and tenon, then glued for added strength.

End Panels: End panels are wood veneered, 1/2" thick engineered wood core plywood, fastened to front frame with tongue-in-groove construction.

Backs: 1/8" hardboard recessed in sides.

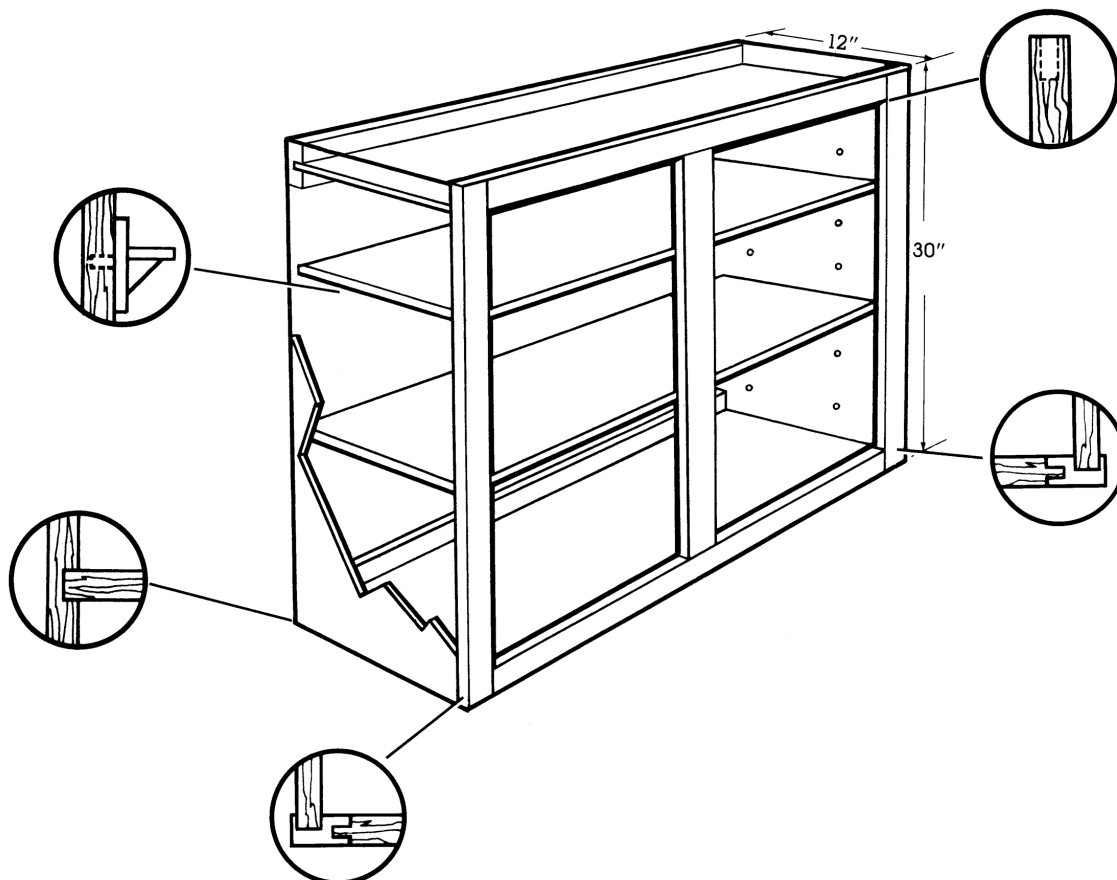
Tops & Bottoms: 3/16" hardboard dadoed into sides, interlocked into hanging rails of all wall units, and secured with an adhesive for added strength.

Hanging Rails: Solid wood, 3/4" x 2-5/8", located at top and bottom.

Shelves: All wall cabinets feature adjustable shelves. A selection of six different heights is built into each 30" high and taller wall cabinet. On 2-door wall units, the center 3" stile is used for center support of adjustable shelves. It is recommended that a 1/4" hole be drilled in the back for additional center support. The extra shelf clip is provided. Shelves are 1/2" engineered wood, with rounded front edge and printed wood grain.

Hardware: Chadwood, Bretwood, Mellowood, Glenwood and Warmwood feature concealed self-closing hinges — no door pulls included.

Finish: A 4-step process is applied to the exterior finish of all Kitchen Kompact cabinets: Stain, Sealer, Sanding, and Catalyzed Top Coat. This finish is resistant to household chemicals such as water, beverages, mild acids — even nail polish.



Base Cabinets

Kitchen Kompact, Inc.
911 E. 11th St. (47130)
P.O. Box 868
Jeffersonville, IN 47131-0868
TEL: 812/282-6681
FAX: 812/282-7880
www.kitchenkompact.com



Frames: All frames are built of solid 3/4" hardwoods. Each rail is kiln-dried, joined by mortise and tenon, then glued for added strength.

End Panels: End panels are wood veneered, 1/2" thick engineered wood core plywood, fastened to front frame with tongue-in-groove construction.

Backs: 1/8" hardboard, recessed in sides.

Bottoms: 3/16" hardboard dadoed into sides and power nailed into supporting strips.

Hanging Rails: Solid wood, 3/4" x 1-1/2", located at top.

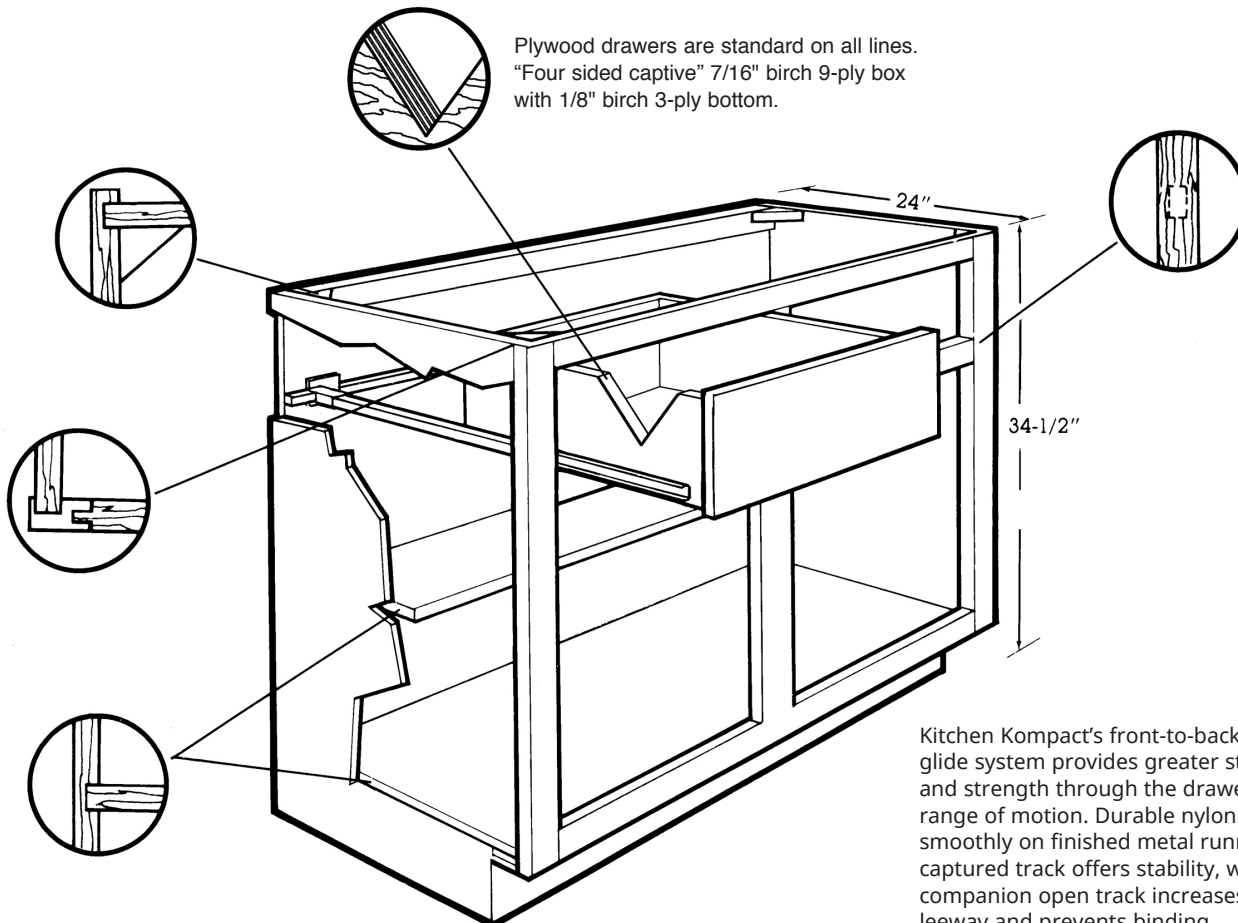
Corners: Wood blocks glued and power nailed.

Toe Kick: 3/4" pine.

Shelf: 1/2" engineered wood 11" deep dadoed into sides, with rounded front edge and printed wood grain.

Hardware: Chadwood, Bretwood, Mellowood, Glenwood and Warmwood feature concealed self-closing hinges — no door pulls included.

Finish: A 4-step process is applied to the exterior finish of all Kitchen Kompact cabinets: Stain, Sealer, Sanding, and Catalyzed Top Coat. This finish is resistant to household chemicals such as water, beverages, mild acids — even nail polish.



Lazy Susan

Kitchen Kompact, Inc.
911 E. 11th St. (47130)
P.O. Box 868
Jeffersonville, IN 47131-0868
TEL: 812/282-6681
FAX: 812/282-7880
www.kitchenkompact.com



Frames: All frames are built of solid 3/4" hardwoods. Each rail is kiln-dried, joined by mortise and tenon, then glued for added strength.

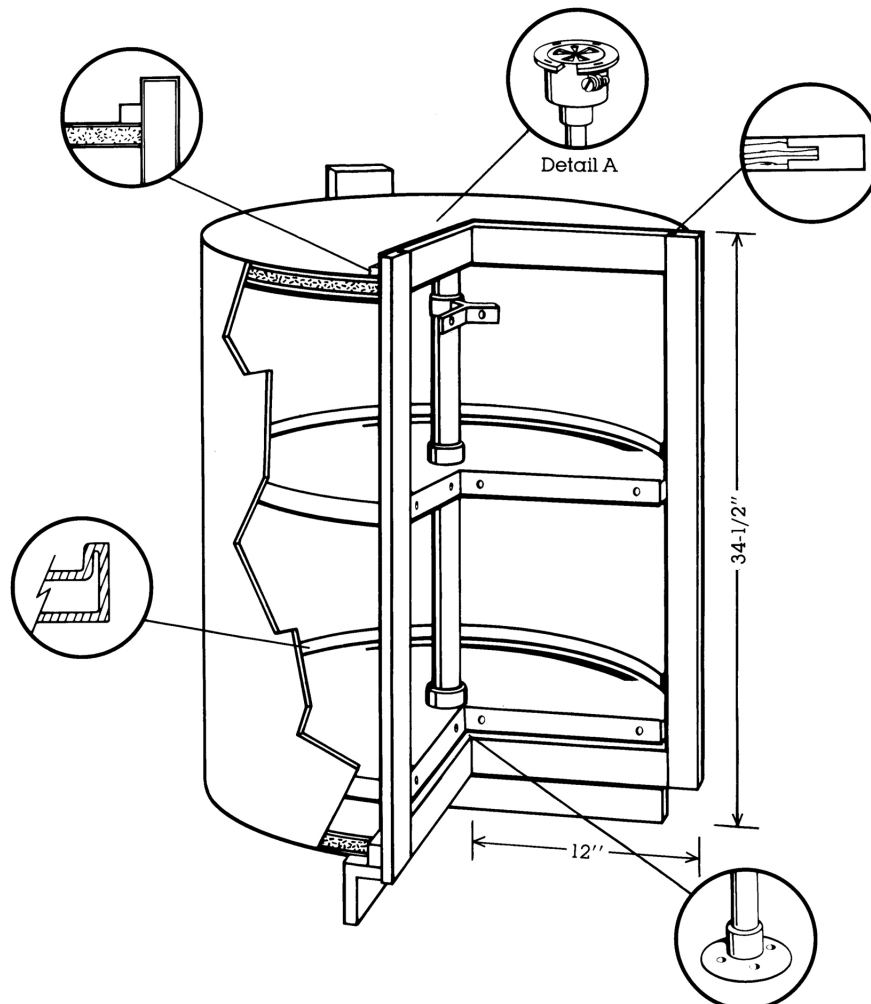
End Panels: Not required unless cabinet is used at the end of a run.

Toe Kick: 3/4" pine.

Shelf: Double-walled high impact polystyrene shelves have internal struts for maximum strength.

Hardware: Engineered with an adjustable mechanism (detail A) for aligning the vertical and rotational position of cabinet doors within the cabinet frame. The nylon gear and cam mechanism requires no lubrication.

Finish: A 4-step process is applied to the exterior finish of all Kitchen Kompact cabinets: Stain, Sealer, Sanding, and Catalyzed Top Coat. This finish is resistant to household chemicals such as water, beverages, mild acids – even nail polish.



ADA Accessible Cabinets

Kitchen Kompact, Inc.
 911 E. 11th St. (47130)
 P.O. Box 868
 Jeffersonville, IN 47131-0868
 TEL: 812/282-6681
 FAX: 812/282-7880
 www.kitchenkompact.com



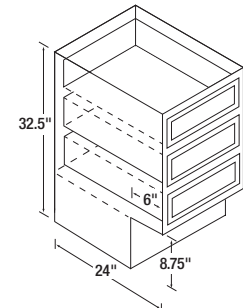
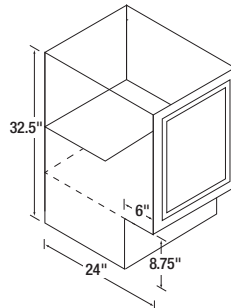
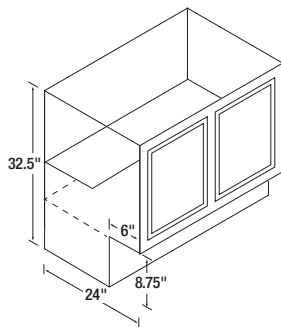
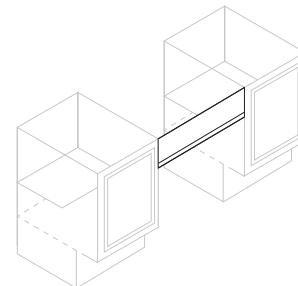
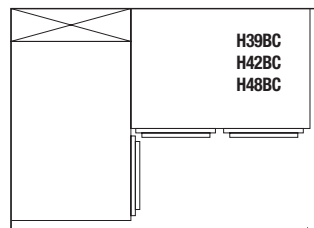
Kitchen Kompact offers 32-1/2" high base cabinets to help comply with ADA (Americans with Disabilities Act) requirements. Such cabinets are especially important for multi-family projects subject to HUD and FHA funding. Kitchen Kompact will only provide ADA accessible cabinets on multi-family projects where the ADA accessible cabinets are 10% or less of the entire project. These cabinets are special order and are available in all door styles. Please allow a minimum of two weeks for delivery. **Price is plus 15% over standard base cabinet.**



Handicapped Design Cabinets

Handicapped design cabinets include:

- Height of 32.5"
- Toe Kick is 8.75"
- No drawers



Universal Design Cabinets

Universal design cabinets include:

- Height of 32.5"
- Standard 4" Toe Kick
- Functioning drawers

